

456 Mill Creek Road

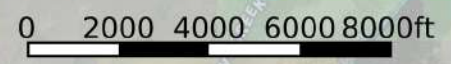
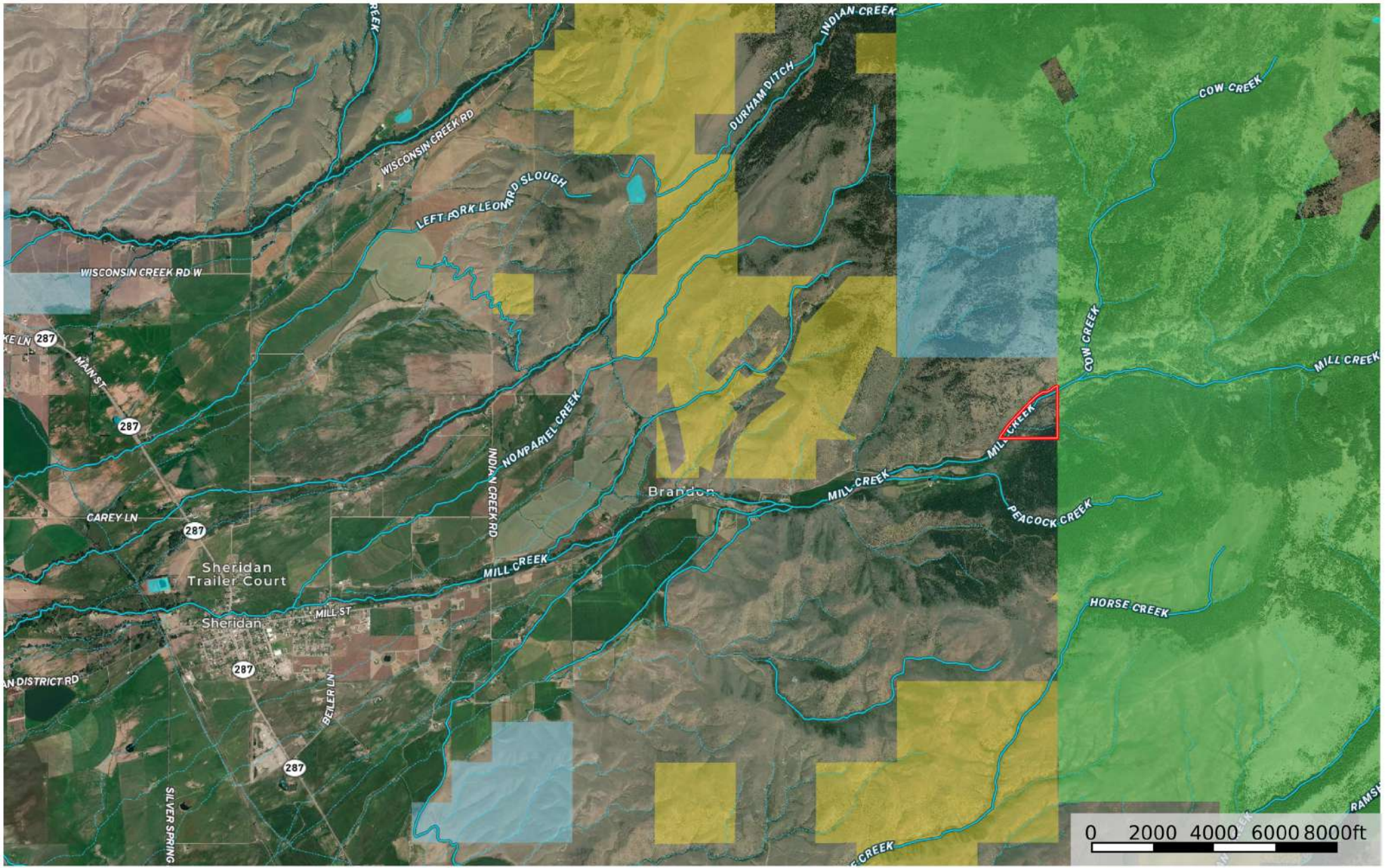
Madison County, Montana, 45.49 AC +/-



- Boundary
- Forest Service
- State Land
- Fish and Wildlife
- National Park
- Other
- BLM
- Local Government
- Stream, Intermittent
- River/Creek
- Water Body

456 Mill Creek Road

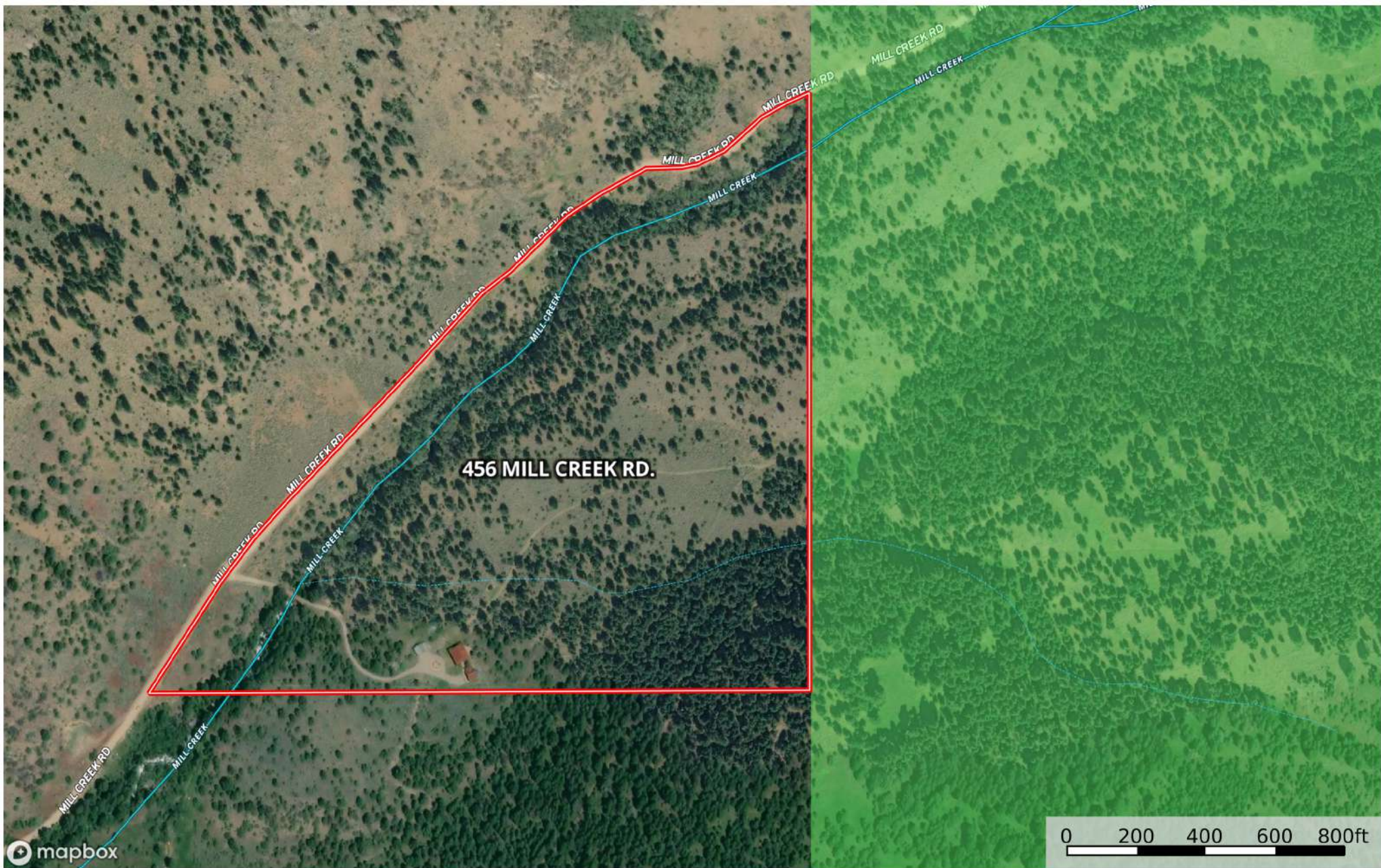
Madison County, Montana, 45.49 AC +/-



- Boundary
- Forest Serv
- State Land
- Fish and Wildlife
- National Park
- Other
- BLM
- Local Government
- Stream, Intermittent
- River/Creek
- Water Body

456 Mill Creek Road

Madison County, Montana, 45.49 AC +/-



- Boundary
- Forest Serv
- State Land
- Fish and Wildlife
- National Park
- Other
- BLM
- Local Government
- Stream, Intermittent
- River/Creek
- Water Body